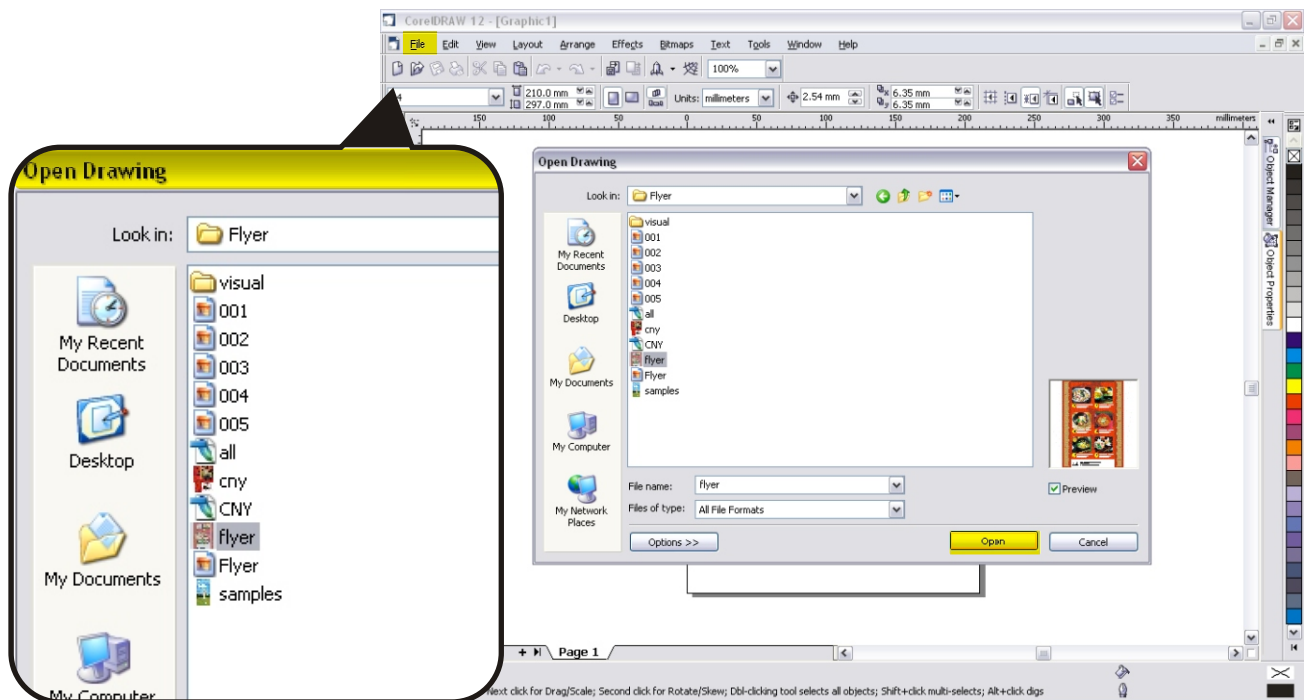


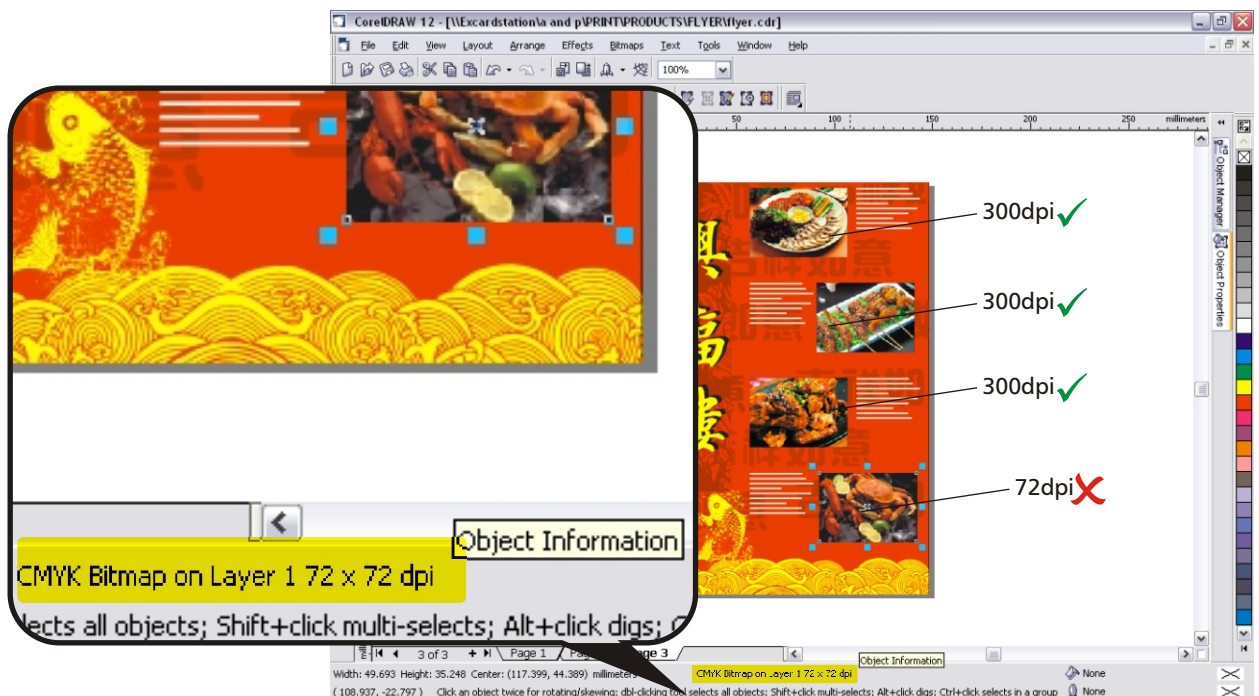


Step 01 - Open the file

Menu bar > File > Open or Ctrl + O



Step 02 - Check the Image Size



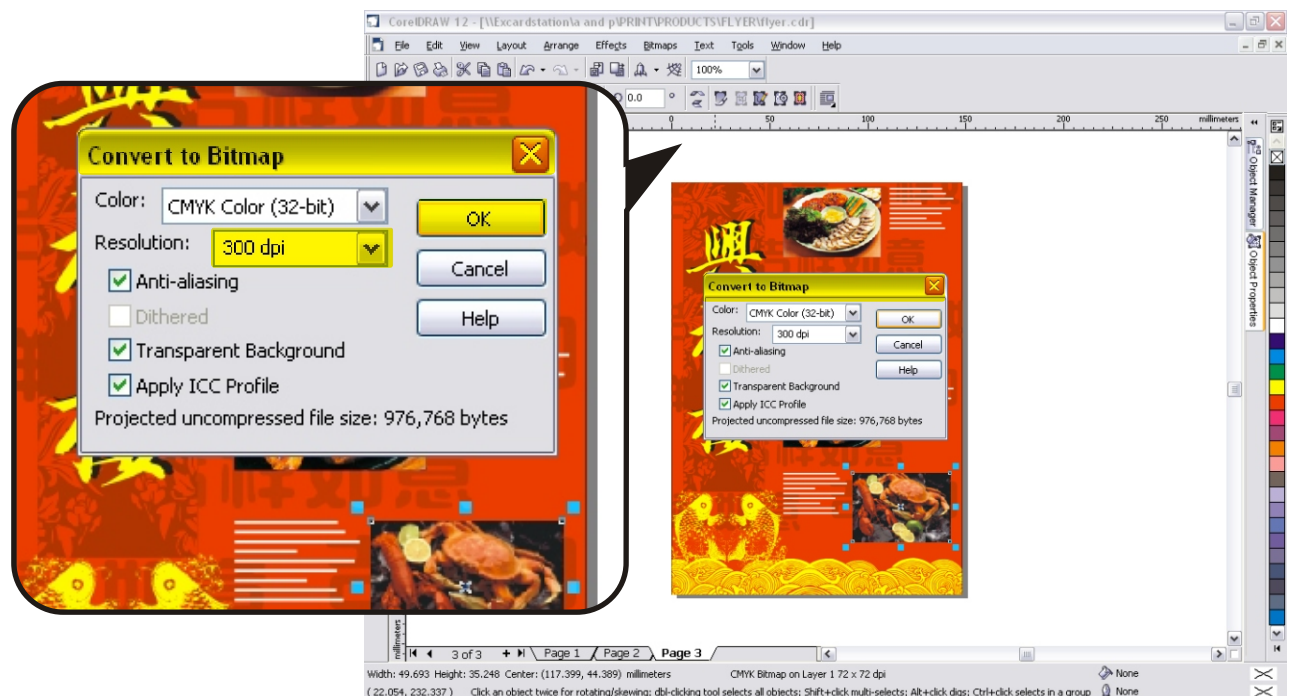


Step 03 - Select the Low Res images convert to High Res image

Menu bar > Bitmaps > Convert to Bitmaps



Step 04 - Change 72dpi to 300dpi then click OK





Step 05 - Check the image



Note: If your original image is less than 300dpi, converting it into High resolution will not sharpen it in print. Therefore, ensure the images you use in your artwork are ideally 300dpi in their original state.

