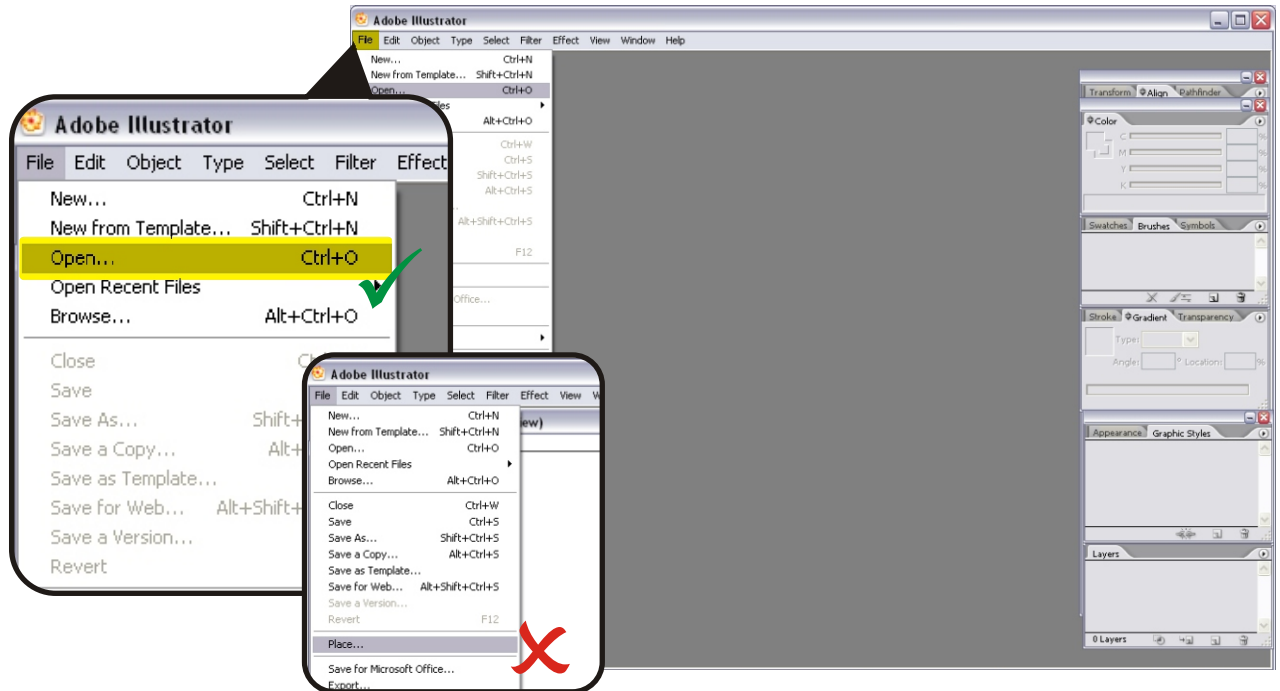




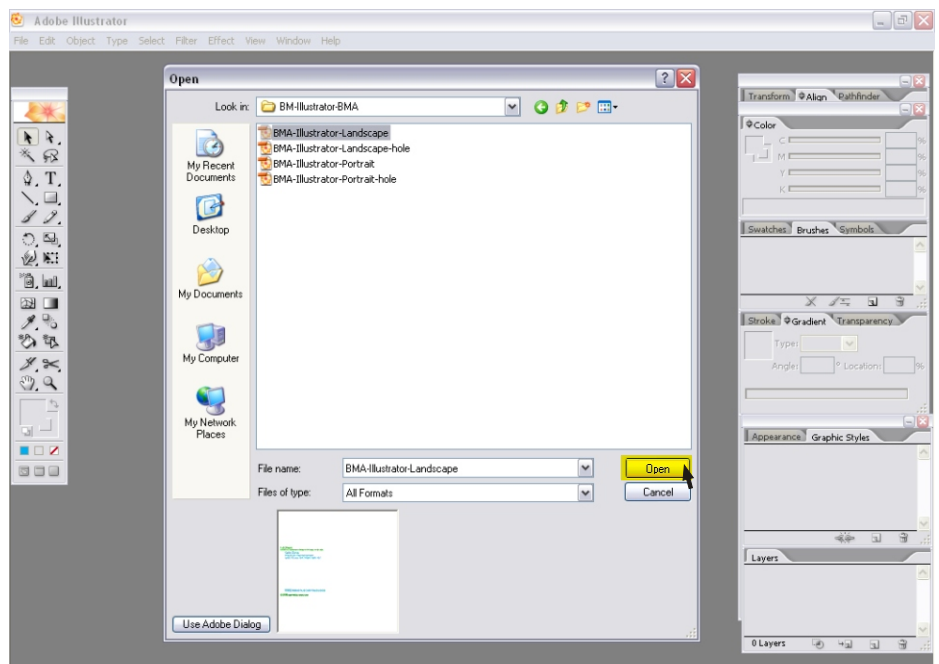
### Step 01 - Open Template Guidelines (Use 'Open' to open our template guidelines not 'Import')

Menu bar > File > Open > or Ctrl + O



### Step 02 - Template Guidelines

Select Template > Open

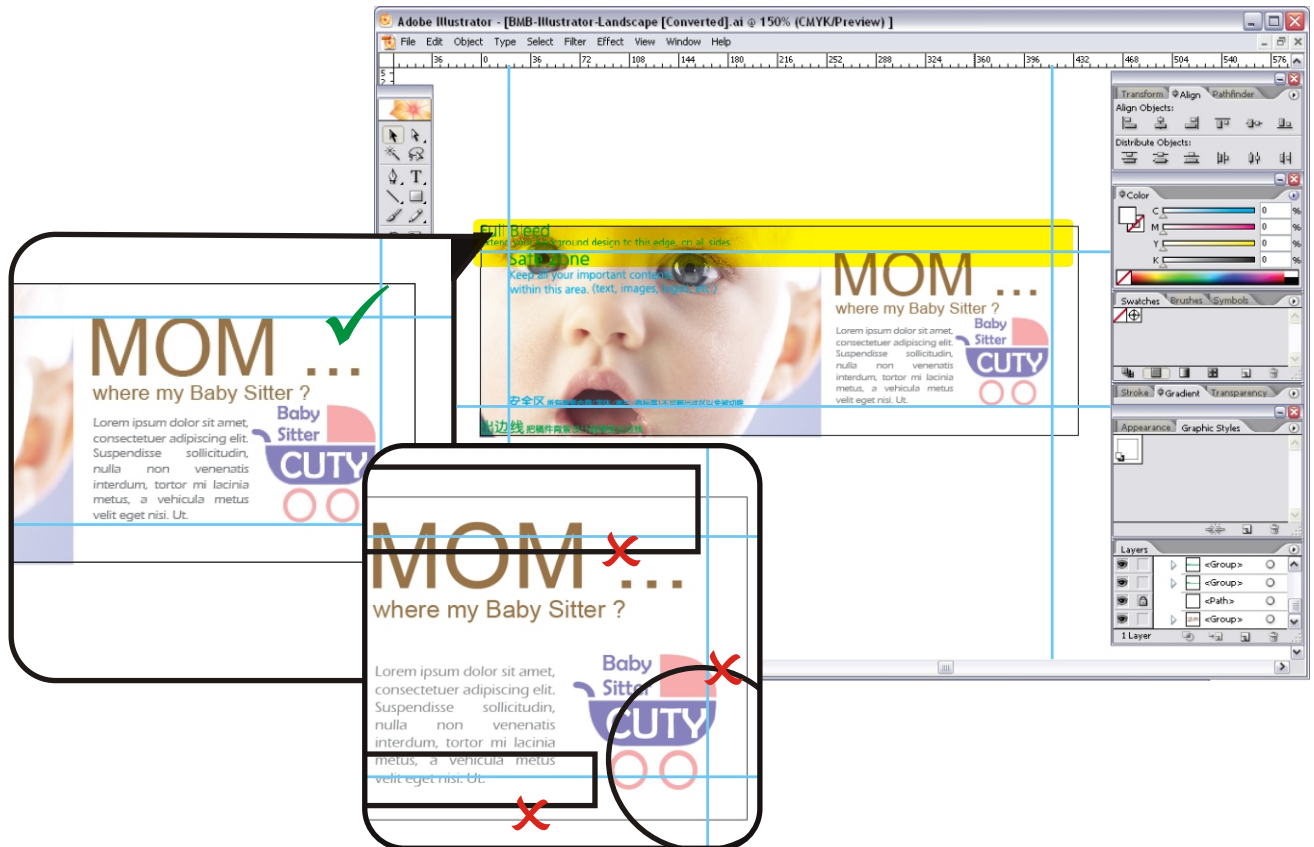




### Step 03 - Adjust your artwork design according to our guidelines

Full Bleed - Extend your background design to this edge, on all 4 sides.

Safe Zone - Keep all your important contents (text, images, logos, etc.) within this area.



### Step 04 - Delete all the guidelines before uploading your file

