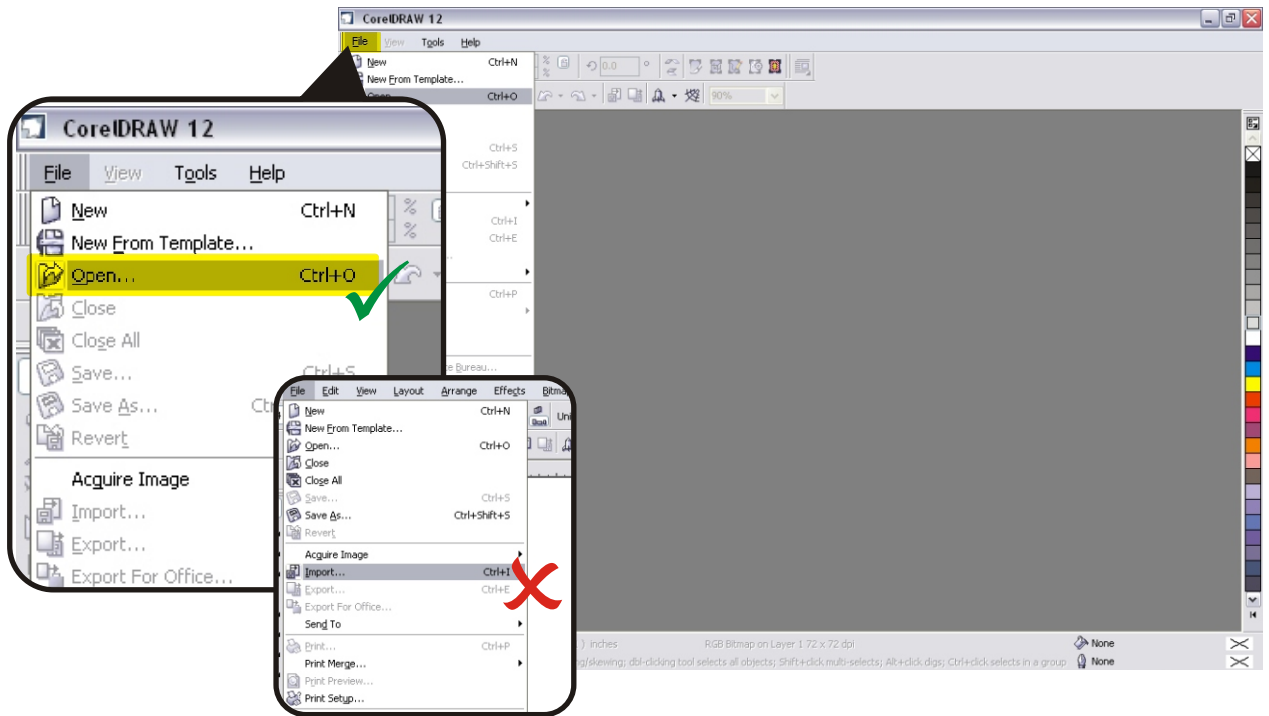




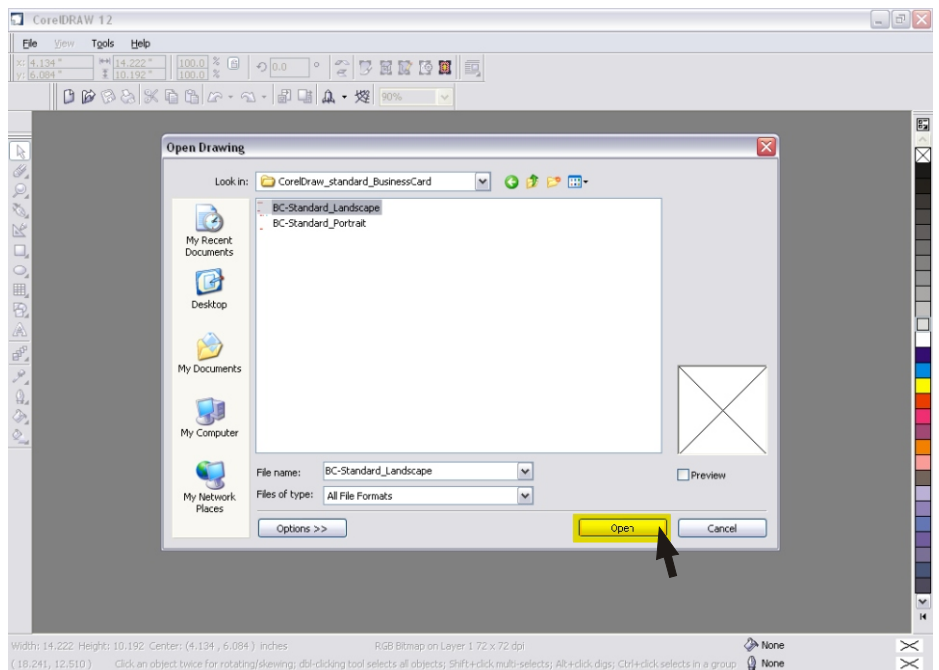
### Step 01 - Open Template Guidelines (Use 'Open' to open our template guidelines not 'Import')

Menu bar > File > Open > or Ctrl + O



### Step 02 - Template Guidelines

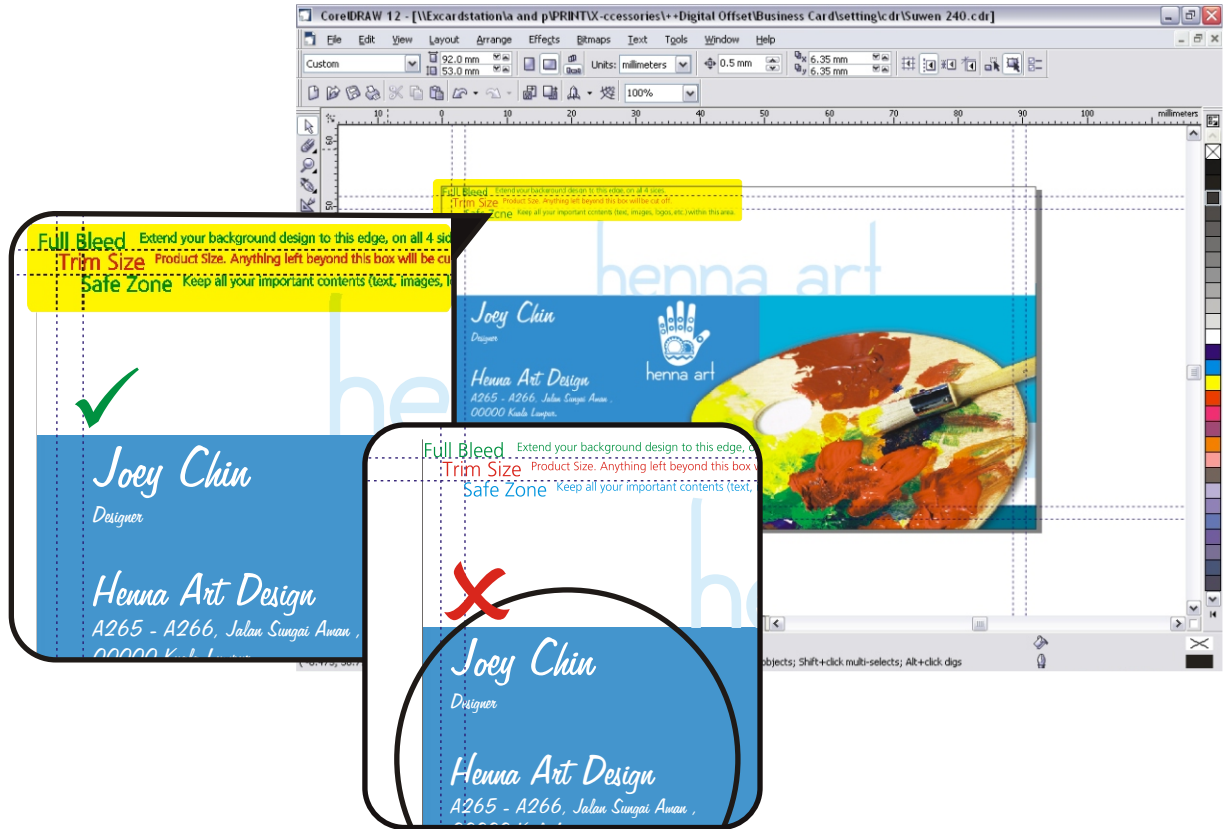
Select Template > Open





### Step 03 - Adjust your artwork design according to our guidelines

**Full Bleed** - Extend your background design to this edge, on all 4 sides.  
**Trim Size** - Product Size. Anything left beyond this box will be cut off.  
**Safe Zone** - Keep all your important contents (text, images, logos, etc.) within this area.



### Step 04 - Delete all the guidelines before uploading your file.

